

Rosetta Map View — work in progress



Show Browse Images Only

Basic Advanced

Expand all Collapse all

MISSIONS

- Ground Based
- Hubble
- Huygens
- Mars Express
- Rosetta
 - Lander
 - Orbiter

TARGETS

INSTRUMENTS

INSTRUMENT TYPES

TIME

PROCESSING LEVEL

WAVELENGTH RANGE

PRODUCT VERSIONS

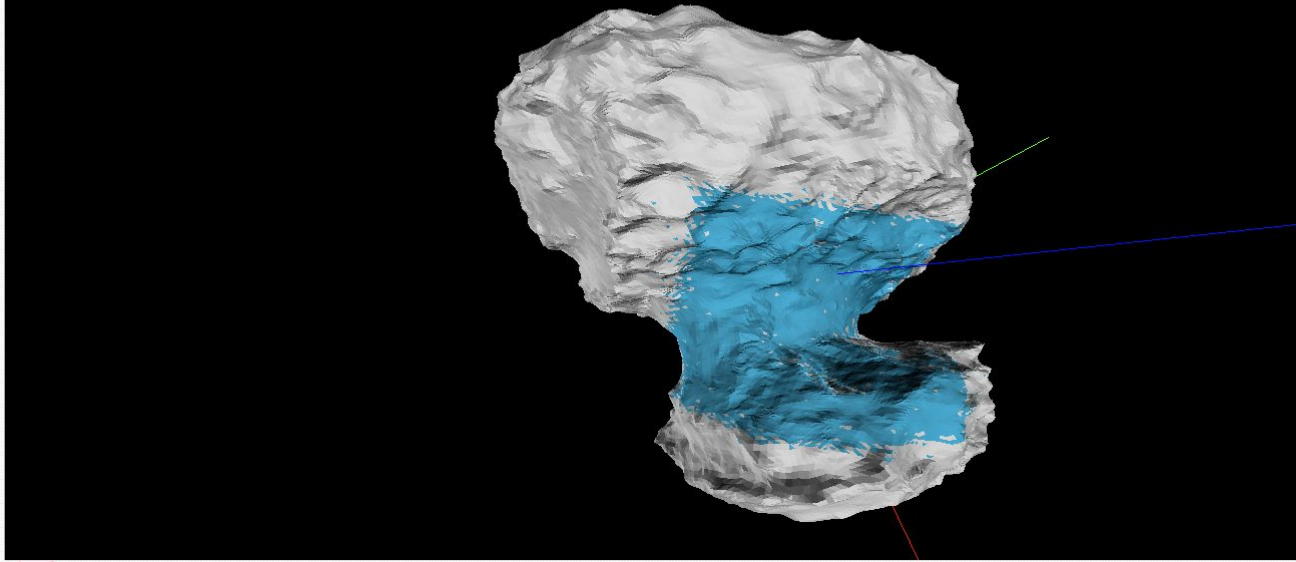
LOCATION

HELIOCENTRIC DISTANCE

OBSERVATIONAL GEOMETRY

RADIUS TO THE CENTER

Search icons



ROS_CAM1_20160929T135033

Identifier
RO-C-NAVCAM-2-EXT3-MTP035-V1.1:DATA:ROS_CAM1_20160929T135033

Title
ROS_CAM1_20160929T135033

Version
1.0

Start Date
2016-09-29 13:50:31.934

Stop Date
2016-09-29 13:50:34.874

Processing Level
2

Modification Date

Target Name
67P/C-G

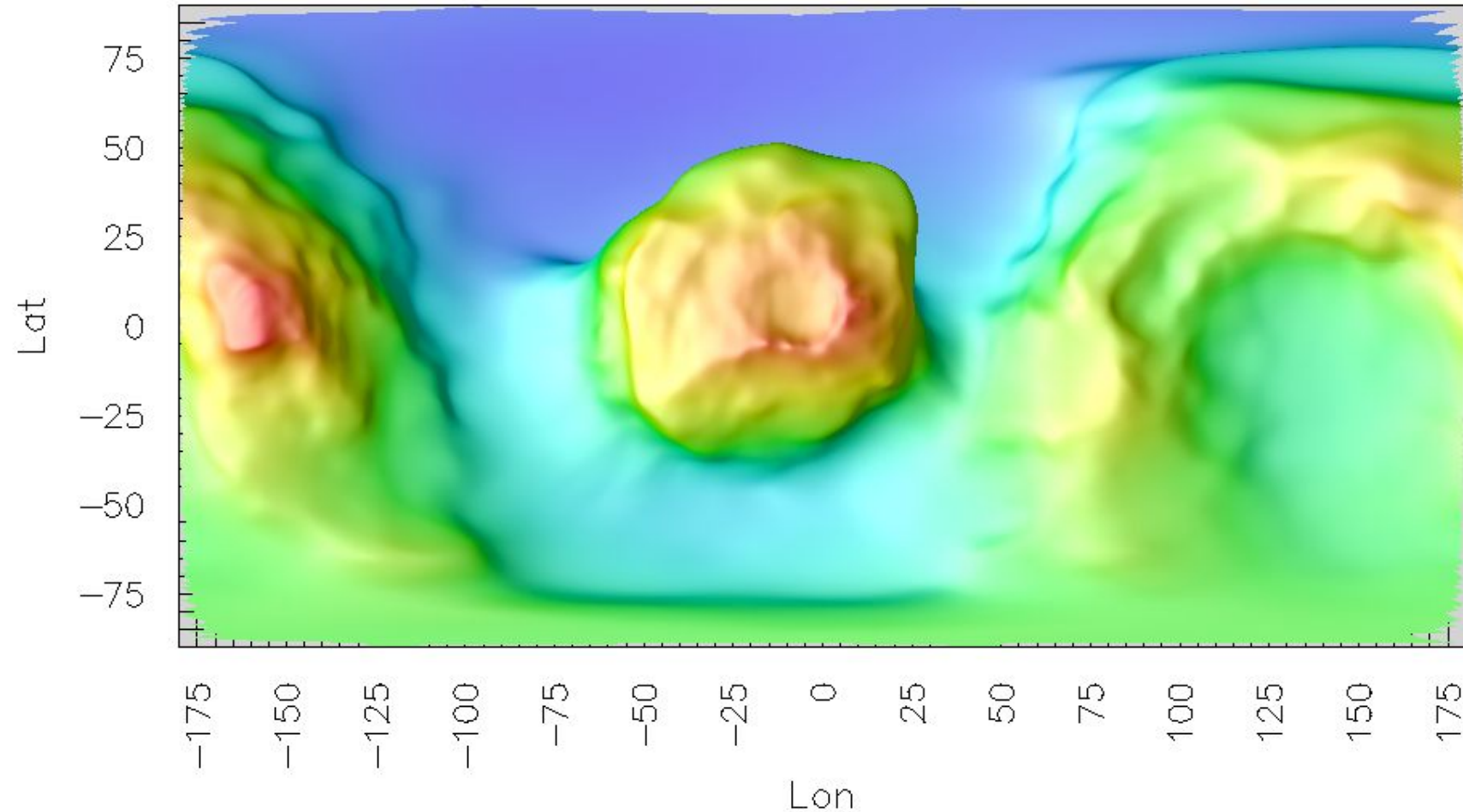
Bundle Logical Identifier
RO-C-NAVCAM-2-EXT3-MTP035-V1.1

Purpose

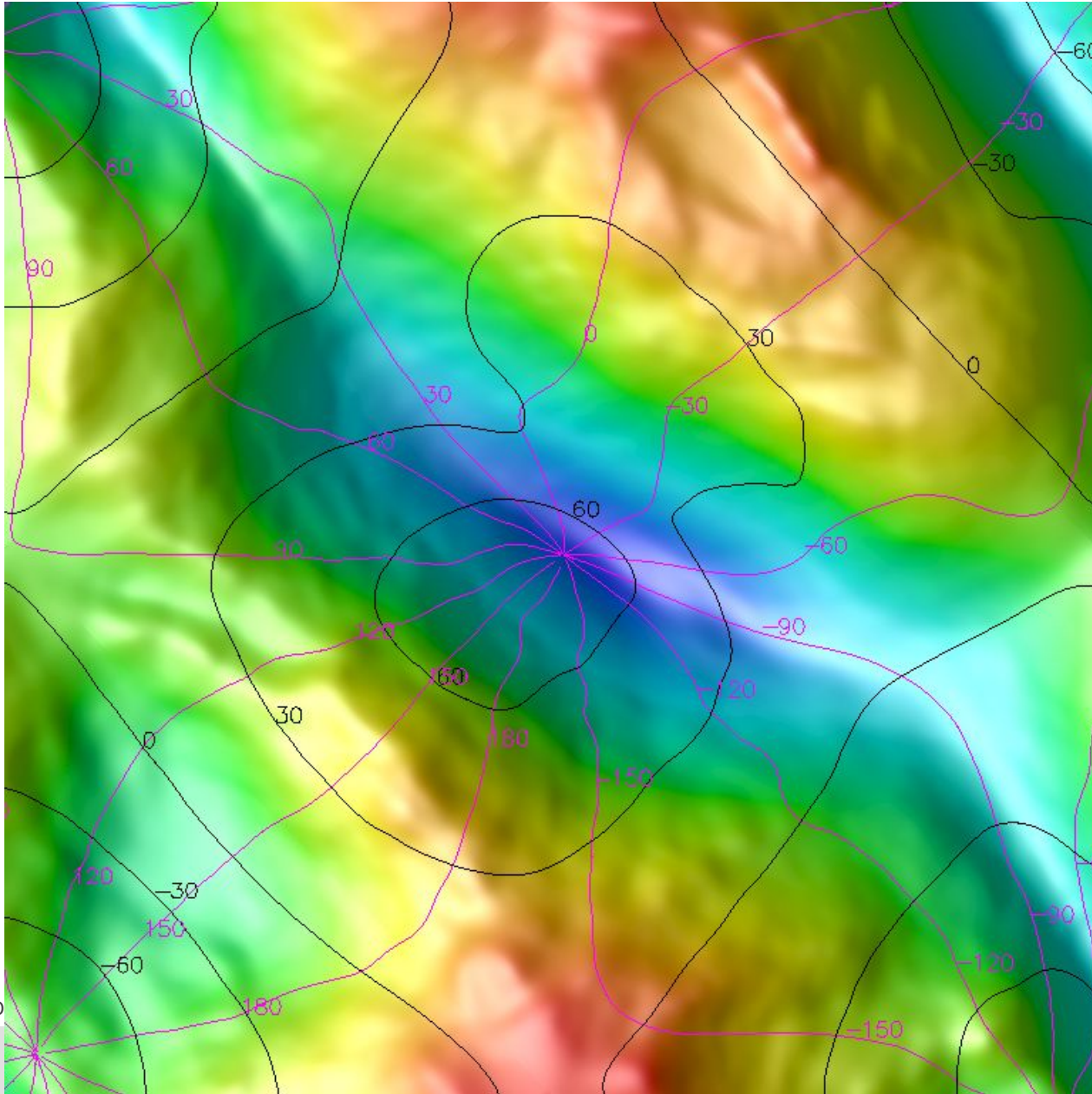
Product Identifier	Observation Start Time	Observation Stop Time	Target	Processing Level
RO-C-NAVCAM-2-EXT3-MTP035-V1.1:DATA:ROS_CAM1_20160929T105033	2016-09-29 10:50:31.910	2016-09-29 10:50:34.780	67P/C-G	2
RO-C-NAVCAM-2-EXT3-MTP035-V1.1:DATA:ROS_CAM1_20160929T125033	2016-09-29 12:50:31.927	2016-09-29 12:50:34.837	67P/C-G	2
RO-C-NAVCAM-2-EXT3-MTP035-V1.1:DATA:ROS_CAM1_20160929T135033	2016-09-29 13:50:31.934	2016-09-29 13:50:34.874	67P/C-G	2
RO-C-NAVCAM-2-EXT3-MTP035-V1.1:DATA:ROS_CAM1_20160929T155033	2016-09-29 15:50:31.949	2016-09-29 15:50:34.939	67P/C-G	2



Bluntly applied equidistant cylindrical projection



The Quincuncial Adaptive Closed Kohonen (QuACK) map



The triptychial projection of the world

