



MATISSE 2.0

a hub for the planetary science community

Angelo Zinzi

angelo.zinzi@ssdc.asi.it



Agenzia Spaziale Italiana

2nd Planetary Mapping and Virtual Observatory Workshop
2 July 2019, Domaine de St. Paul, Saint-Rémy-lès-Chevreuse, France



Space Science Data Center



Agenzia Spaziale Italiana

6 years ago

(**Bormio 2013**)

MATISSE was firstly presented to the Italian planetological community, with a demo version



MATISSE



Version 1.7.10

[angelo.zinzi \(Logout\)](#)

[Feedback](#)

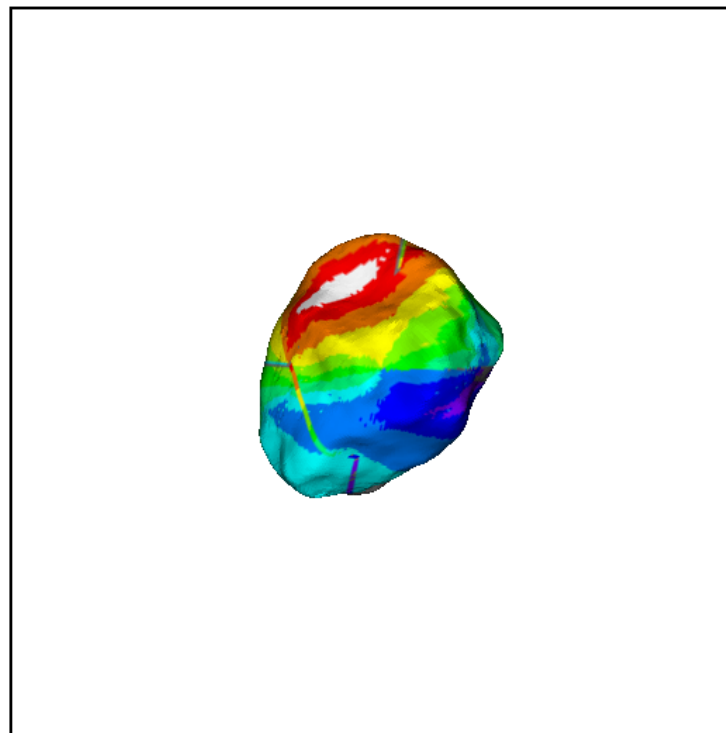
[Own SEDS](#)



Multi-instrument Advanced Tool for the Italian Solar System Exploration

Demo Version 0.1

Source: [21 Lutetia](#)



Header Info:

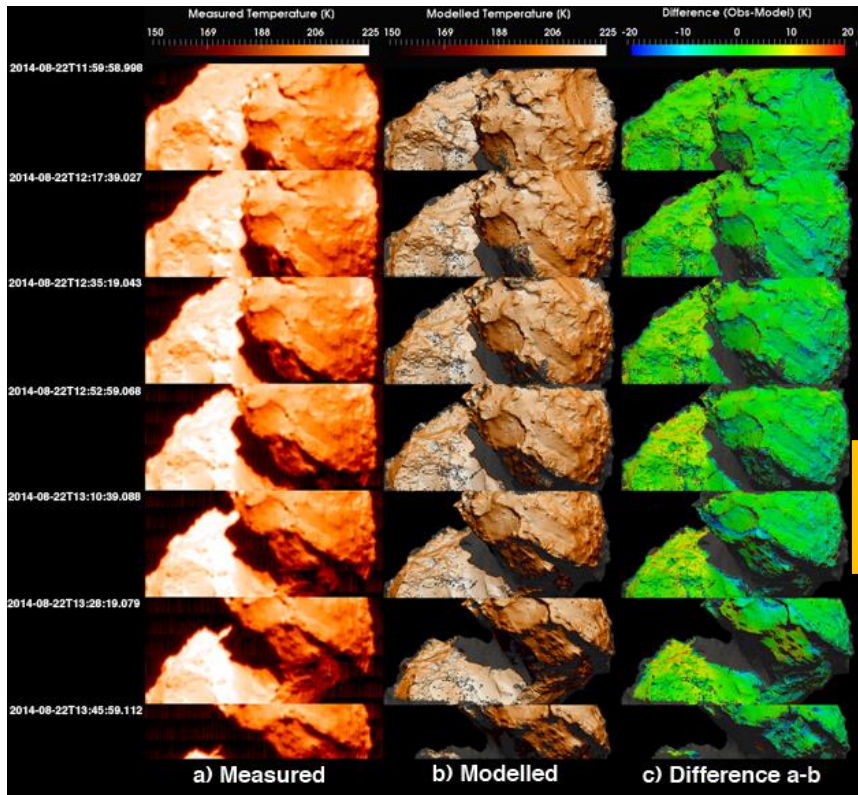
Channel = 1

Start_time = 2010-07-10T15:36:34.216

Stop_time = 2010-07-10T15:51:53.653

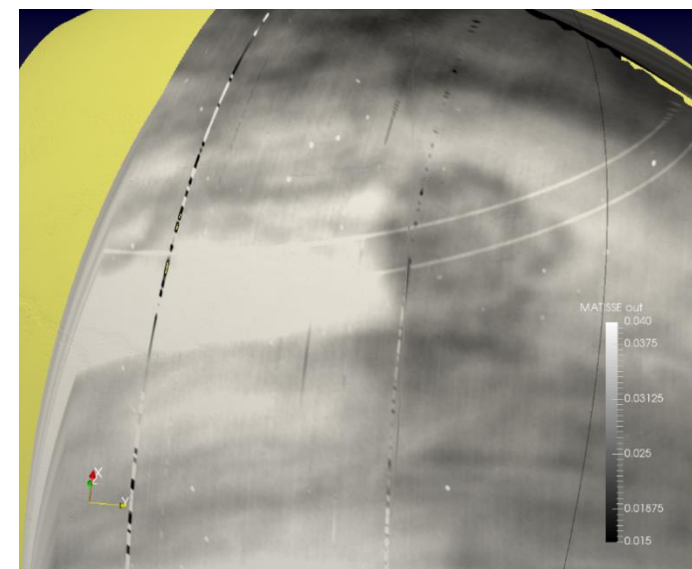
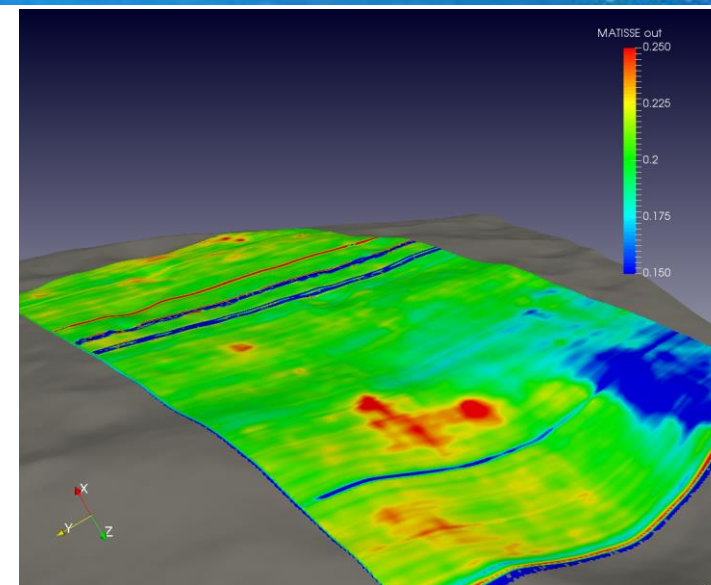
Repetition_time = 5

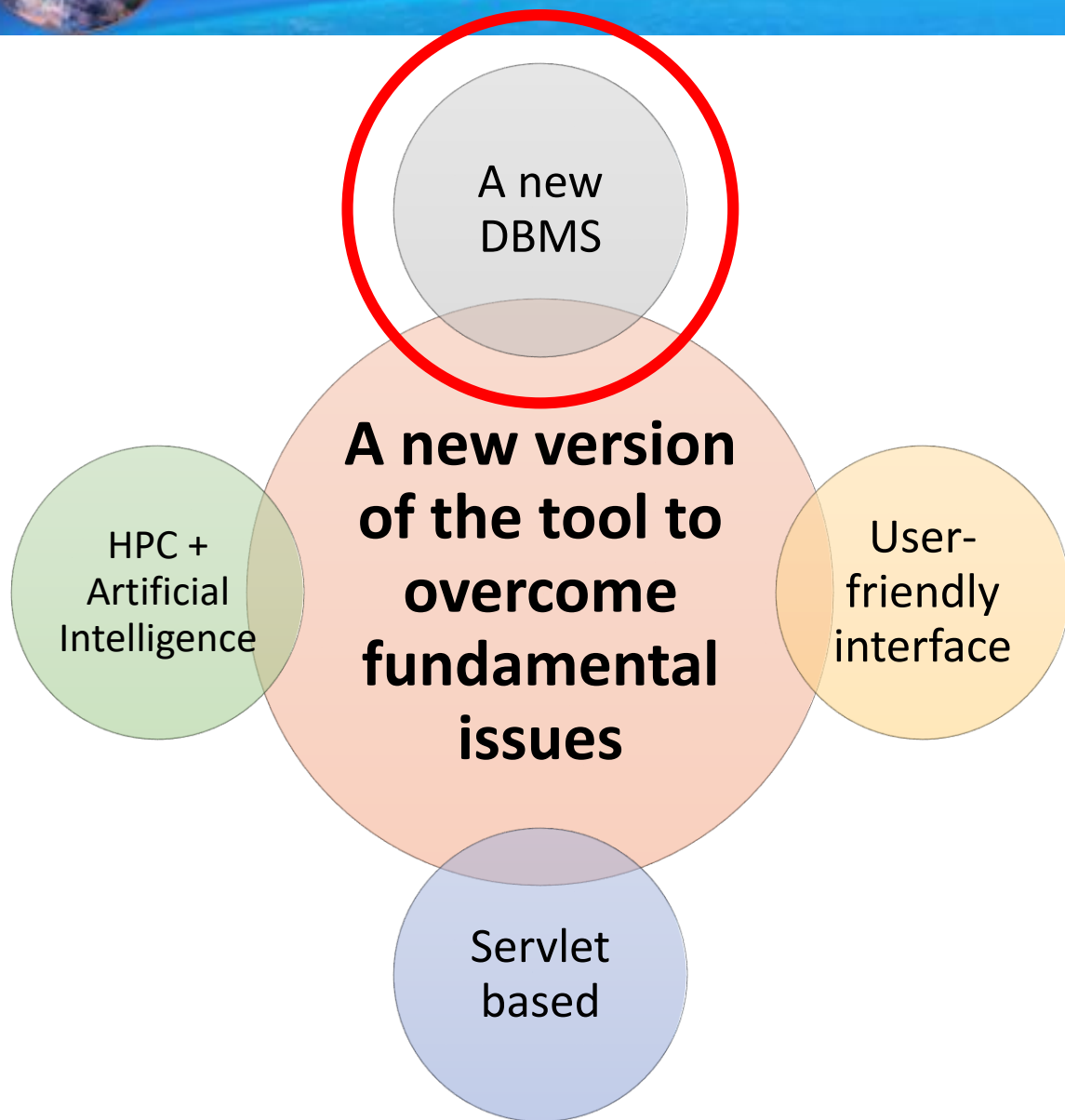
[Back](#)



During these years the tools has grown up, improving its scientific capabilities and including several targets, missions

We also used MATISSE in several outreach/educational programs

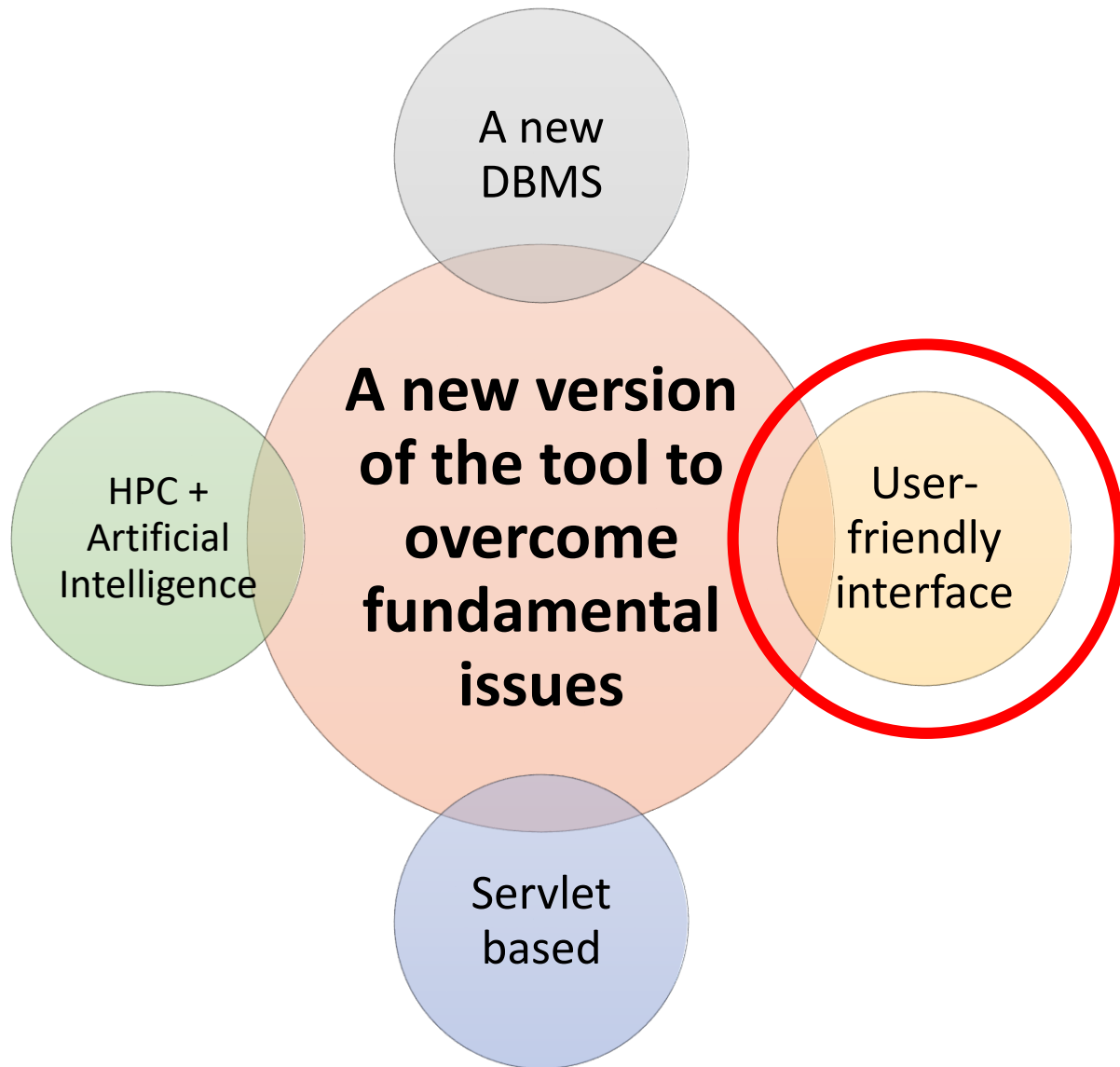




The PostgreSQL + PostGIS solution allows to correctly manage spatial queries, also improving spatial interpolation between observations and DTMs/shape models



Space Science Data Center



MATISSE 2.0
Multi-purpose Advanced Tool for Instruments for the Solar System Exploration

Search | Query Results | 3D visualization

Select Target: Mars | Missions: MRO | Instruments: CRISM-IR (EXT)

Search on Map | Search Criteria

Draw an area on map or search an object

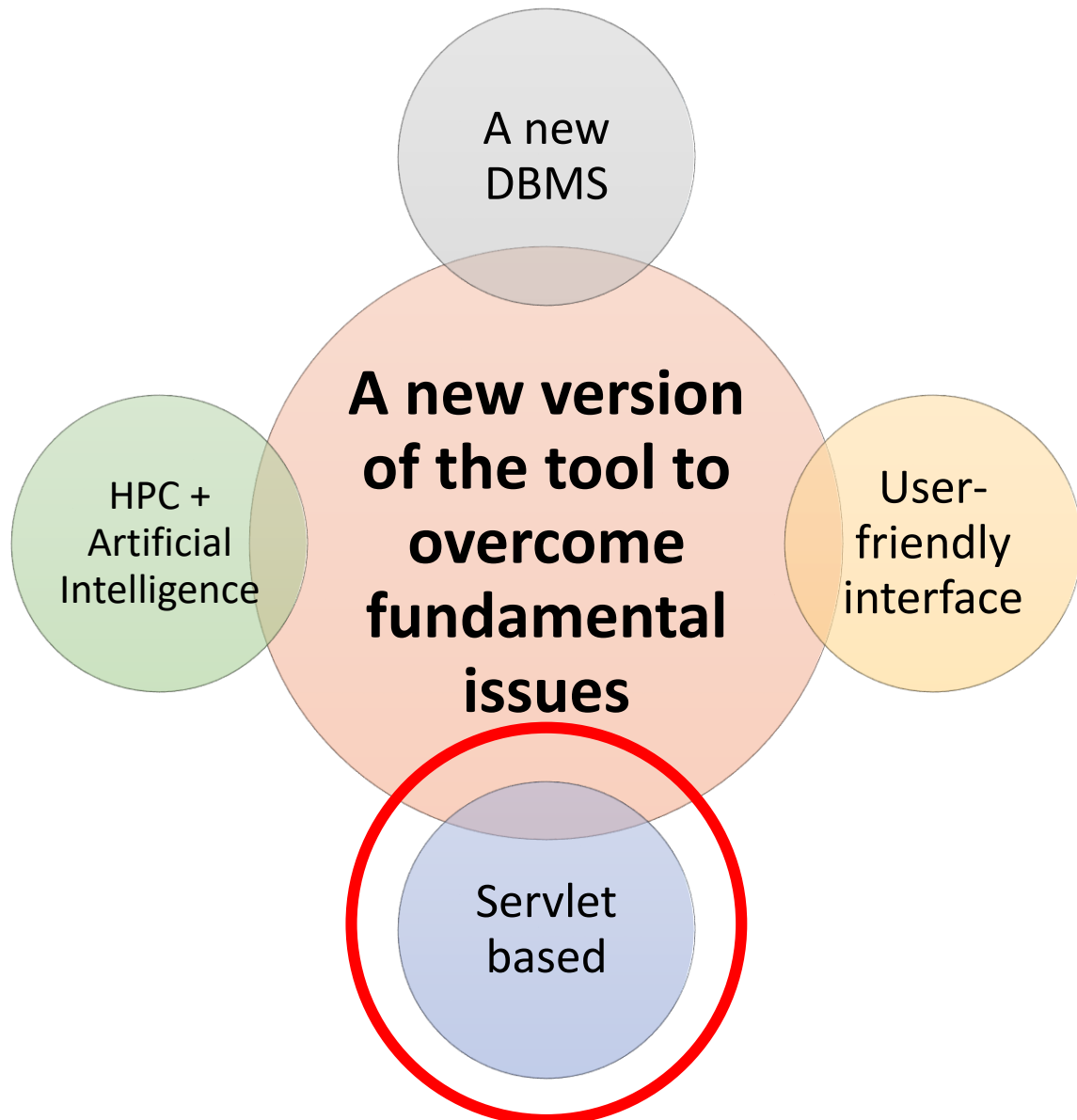
Object Name: [input field]

minlon: -79.01 | maxLon: -47.37 | minLat: 37.33 | maxLat: 14.47

Planetary FITS and VTP files allow 2D/3D interactions on the web

2D Download FITS | 3D Download VTP

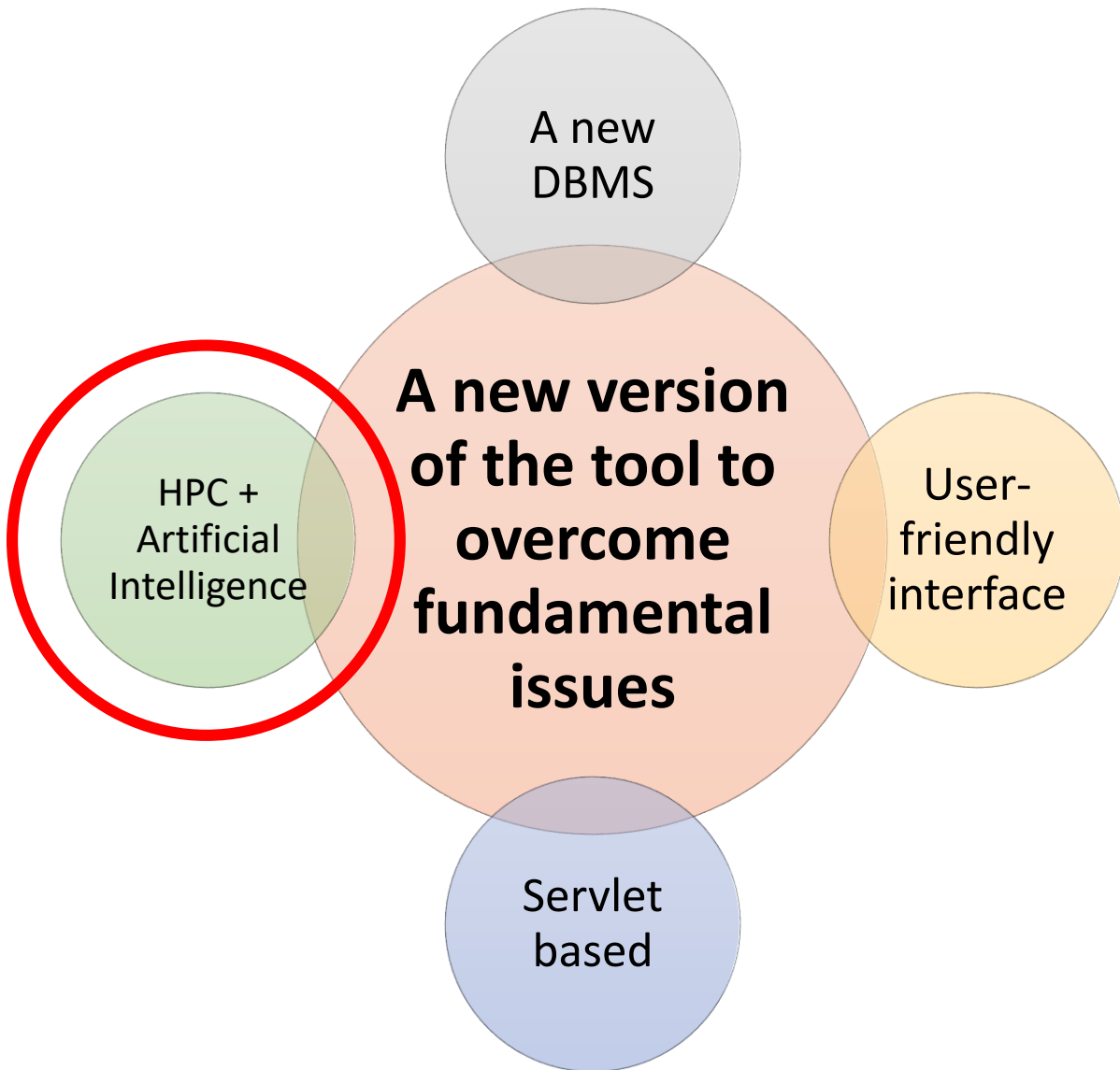
Matisse 2 © SSCDC



It will be possible to execute complex queries by command-line



Space Science Data Center



Big data, featuring the 5 Vs of
Variety, **V**eracity, **V**elocity, **V**olume and **V**alue

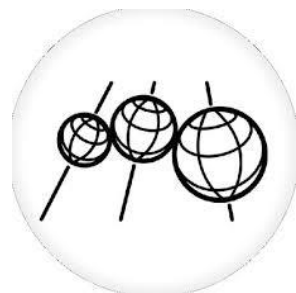
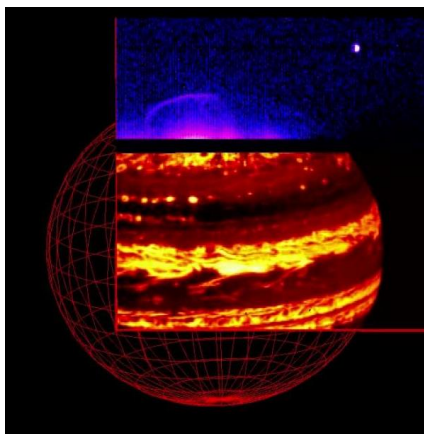


Space Science Data Center



A hub for scientists and citizens

Science



Outreach / Educational





MATISSE 2.0 is now online as a beta version

Try it at

<https://193.204.103.156/Matisse/>

and give us feedbacks!

Thank you for your attention... and I'll waiting for you at the poster

angelo.zinzi@ssdc.asi.it